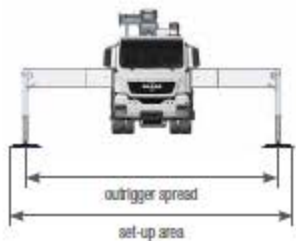
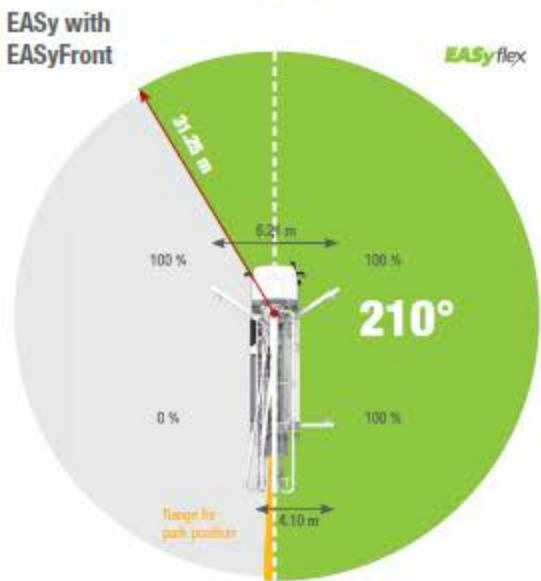
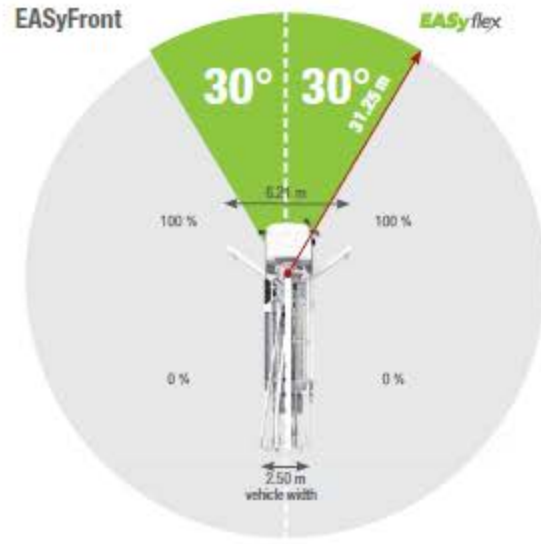
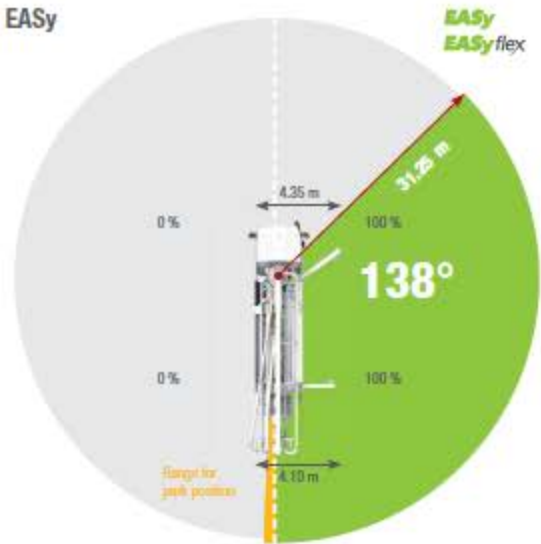


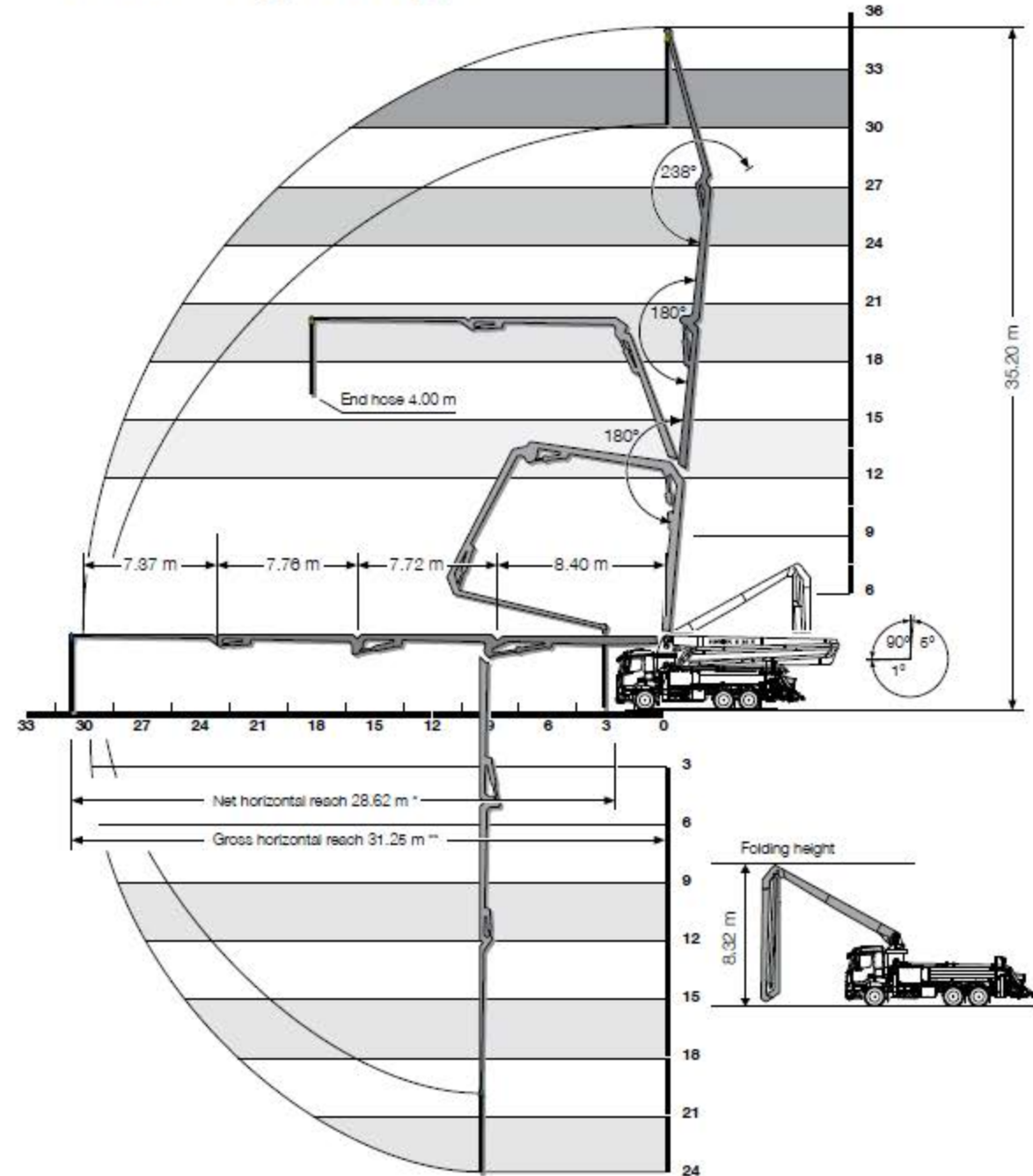
# EASy and EASyflex

The outrigger systems EASy and EASyflex extend the range of applications of the S 36 X. With EASy, the concrete pump can be safely supported on one side, if required, thereby covering a working range of 138°. EASyflex provides further outrigger combinations and as such, more flexibility on the jobsite. In this way, pump applications can be achieved with the maximum working safety even in difficult, restricted spaces. More flexibility for more safety.



The outrigger spreads as specified are measured from the centre of the outrigger leg. Any cribbing or underlay timbers must be taken into account when determining the required set-up area.

# Working range



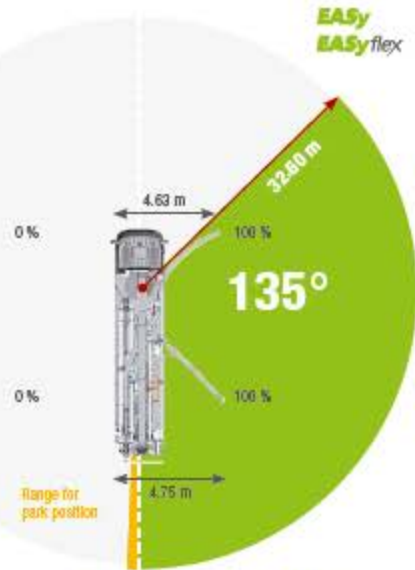
\* from front bumper  
\*\* from centre of turret

**EASy and EASyflex**

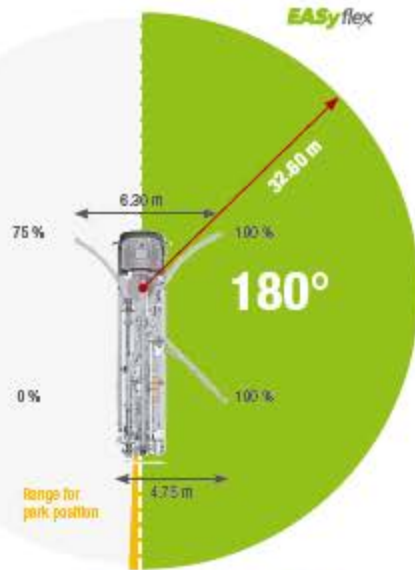
The outrigger systems EASy and EASyflex extend the range of applications of the S 43 SX III. With EASy, the concrete pump can be safely supported on one side, if required. Thereby covering a working range of 135°. EASyflex provides further outrigger combinations and as such, more flexibility on the jobsite. In this way, pump applications can be achieved with the maximum working safety even in difficult, restricted spaces. More flexibility for more safety.

**Working range**

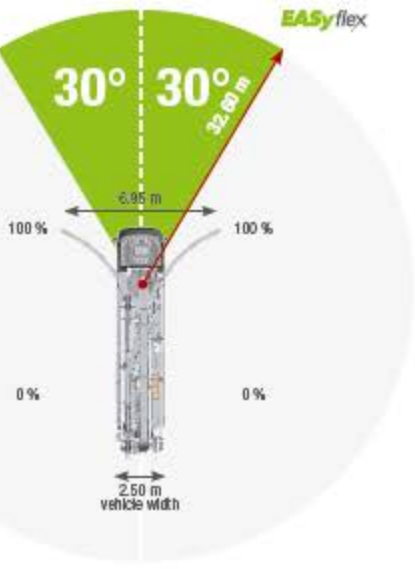
**EASy**



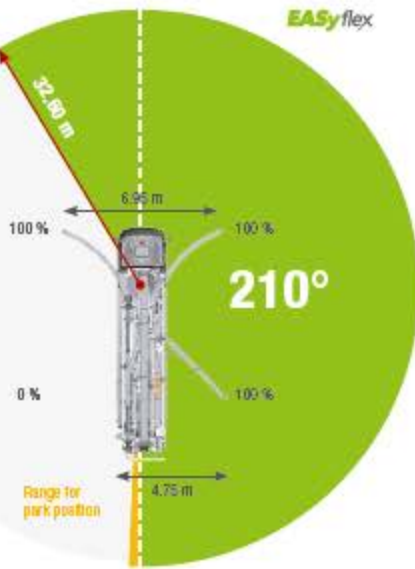
**EASy180**



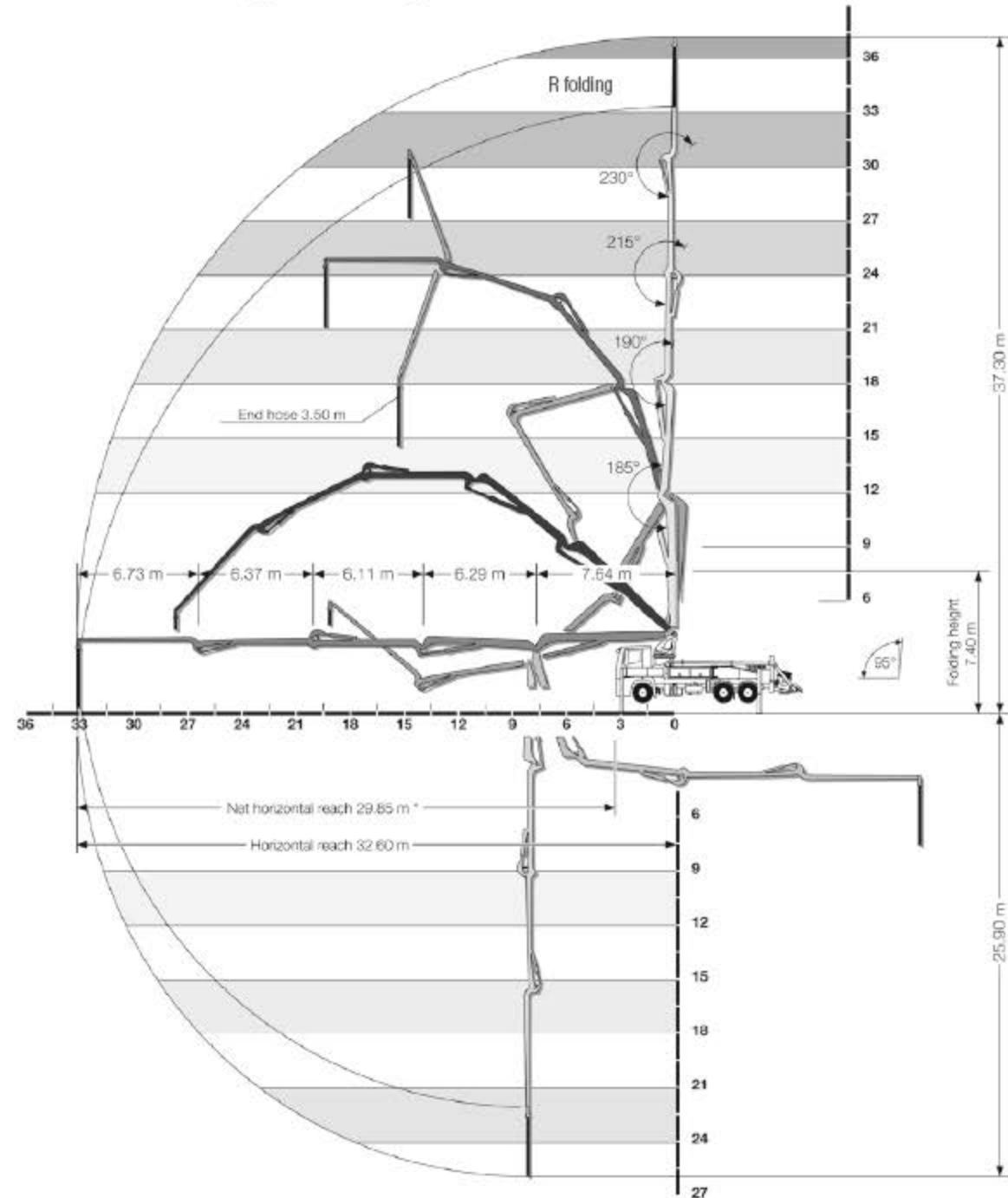
**EASyFront**



**EASy with EASyFront**



The outrigger spreads as specified are measured from the centre of the outrigger leg. Any cribbing or underlay timbers must be taken into account when determining the required set-up area.



\* from front bumper